

UBL6H



Light Efficiency:



Light Quality:



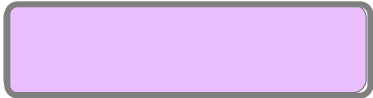
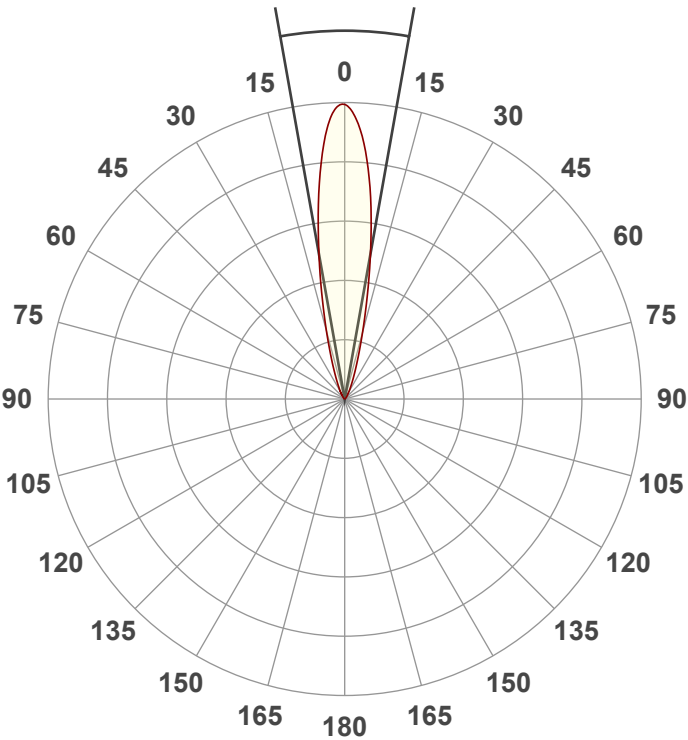
Color Temperature:



Output: 988 lm
Peak: 5367 cd
Power: 28.1 W
PF: 0.59



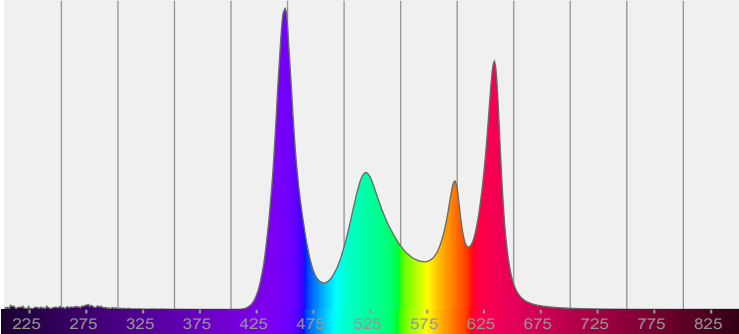
Beam Angle 20.1°



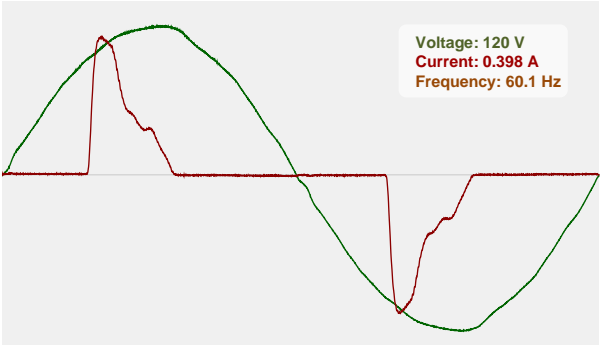
CIE 1931
x: 0.315
y: 0.281

Test:
Full On No UV Frost Filter
Date:
2/2/2024
Note:

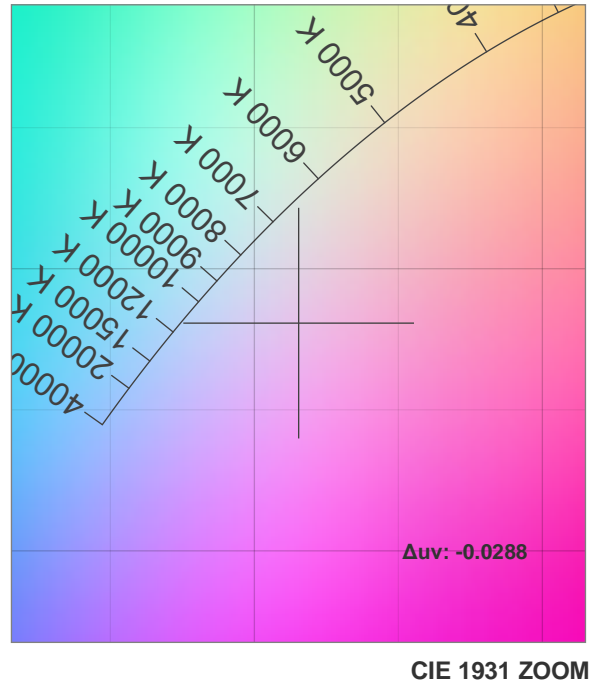
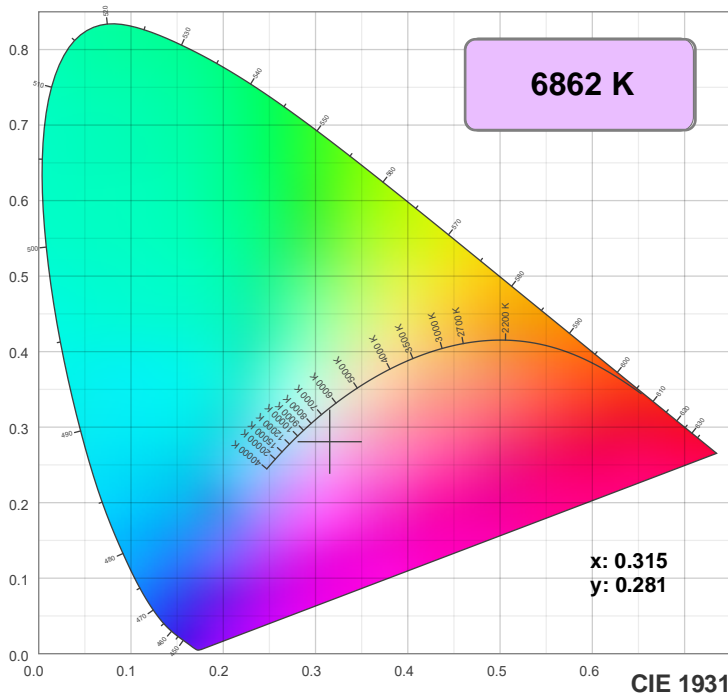
Spectra Dominant Wavelength:360nm



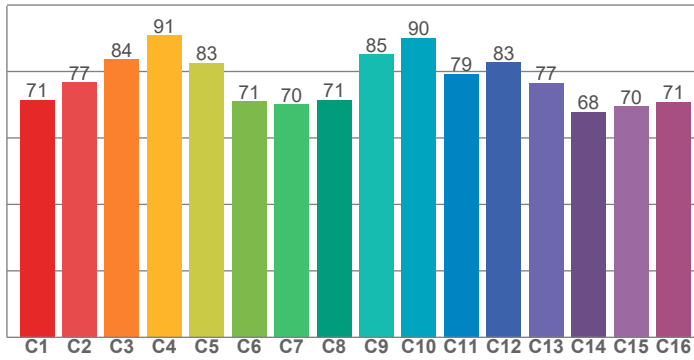
Power



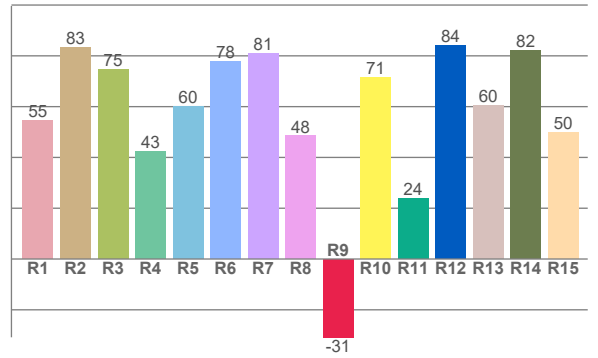
Color Details



TM30: 78.4



CRI: 65.4 (R1-R8)



CRI R values, only R1-R8 are used to calculate final CRI value

R1	R2	R3	R4	R5	R6	R7	R8	R9	R10	R11	R12	R13	R14	R15
54.7	83.4	74.8	42.5	60.1	77.9	81.0	48.5	-30.8	71.3	23.9	84.2	60.4	82.0	49.7

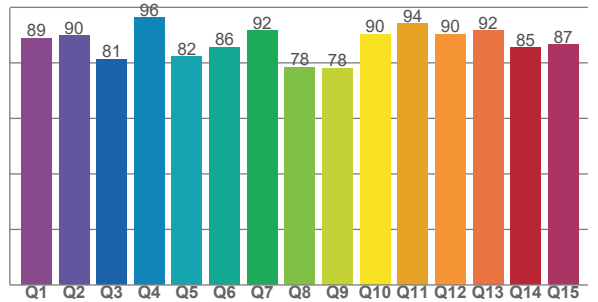
TM30 C values, 16 binned values out of total of 99 C values

C1	C2	C3	C4	C5	C6	C7	C8	C9	C10	C11	C12	C13	C14	C15	C16
71.4	76.6	83.7	90.9	82.5	71.0	70.1	71.4	85.1	90.1	79.2	82.7	76.6	67.8	69.6	70.9

CQS Q values

Q1	Q2	Q3	Q4	Q5	Q6	Q7	Q8	Q9	Q10	Q11	Q12	Q13	Q14	Q15
88.9	89.8	81.3	96.2	82.3	85.7	91.6	78.5	78.2	90.4	94.2	90.3	91.7	85.4	86.5

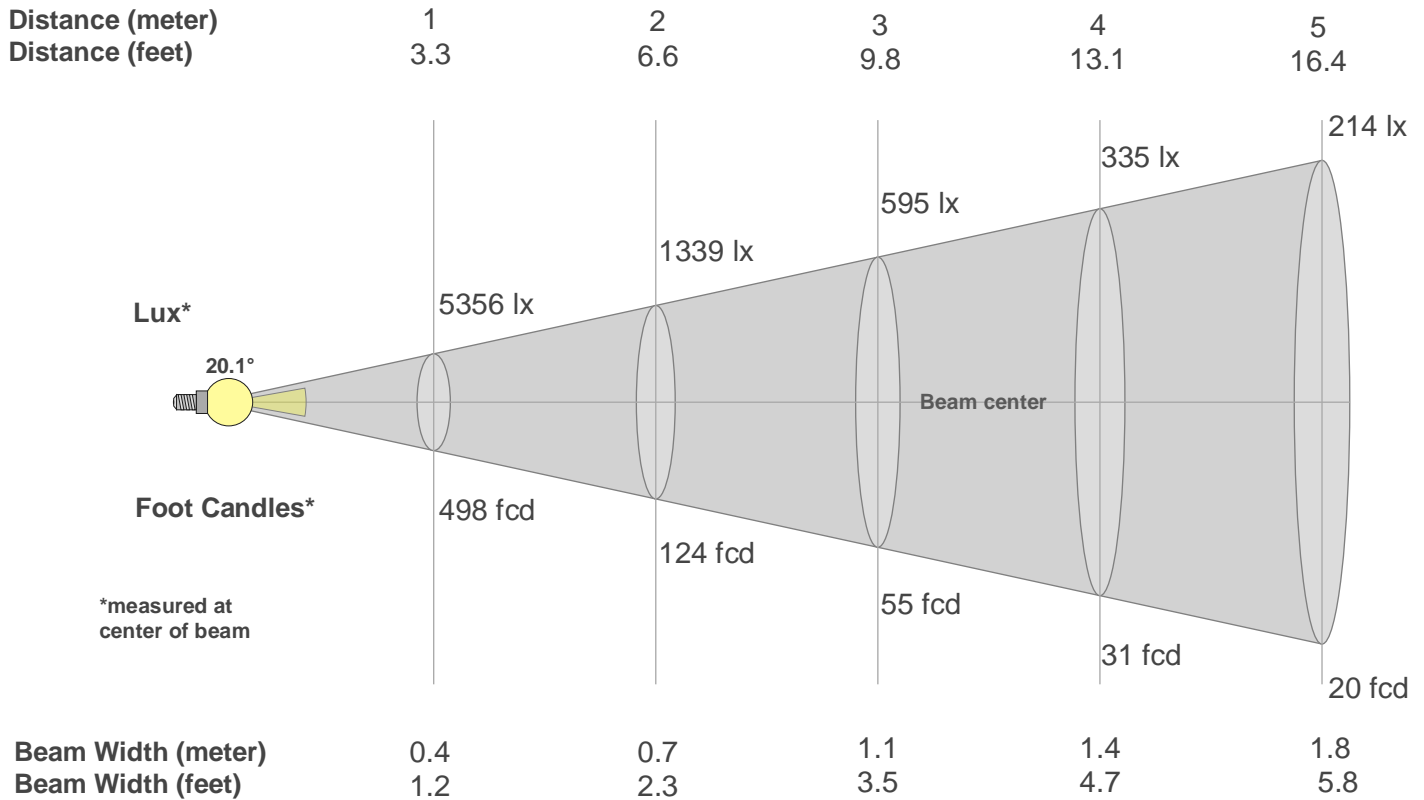
CQS: 86.3



Color Parameters

Color Temperature	Color Rendering Index	Red Component	Color Fidelity	Color Gamut	Color Quality Scale	Color Coordinate CIE 1931	Color Coordinate CIE 1931	Color Coordinate	Color Coordinate	Color Deviation from Black Body
CCT	CRI	CRI R9	TM30 Rf	TM30 Rg	CQS	x	y	u	v	Δuv
6862 K	65.4	-30.8	78.4	122.2	86.3	0.315	0.281	0.220	0.294	-0.0288

Beam Details



Beam Intensities from 1-20m

m	1	2	3	4	5	6	7	8	9	10	11	12	13	14	15	16	17	18	19	20
ft	3.3	6.6	9.8	13.1	16.4	19.7	23	26.2	29.5	32.8	36.1	39.4	42.7	45.9	49.2	52.5	55.8	59.1	62.3	65.6
lx	5356	1339	595	335	214	149	109	84	66	54	44	37	32	27	24	21	19	17	15	13
fcd	497.6	124.4	55.3	31.1	19.9	13.8	10.2	7.8	6.1	5	4.1	3.5	2.9	2.5	2.2	1.9	1.7	1.5	1.4	1.2

Intensities in 0° C-plane

0°	2°	4°	6°	8°	10°	12°	14°	16°	18°	20°	22°	24°	26°	28°	30°	32°	34°	36°	38°
5356	5261	4856	4207	3458	2708	2050	1508	1097	797	586	437	331	253	197	151	119	104	85	67
100%	98%	91%	79%	65%	51%	38%	28%	20%	15%	11%	8%	6%	5%	4%	3%	2%	2%	2%	1%

Intensities in 90° C-plane

0°	2°	4°	6°	8°	10°	12°	14°	16°	18°	20°	22°	24°	26°	28°	30°	32°	34°	36°	38°
5356	5261	4856	4207	3458	2708	2050	1508	1097	797	586	437	331	253	197	151	119	104	85	67
100%	98%	91%	79%	65%	51%	38%	28%	20%	15%	11%	8%	6%	5%	4%	3%	2%	2%	2%	1%

Intensities in 180° C-plane

0°	2°	4°	6°	8°	10°	12°	14°	16°	18°	20°	22°	24°	26°	28°	30°	32°	34°	36°	38°
5356	5157	4743	4150	3449	2709	2035	1483	1071	779	576	432	327	251	196	153	122	106	86	70
100%	96%	89%	77%	64%	51%	38%	28%	20%	15%	11%	8%	6%	5%	4%	3%	2%	2%	2%	1%

Intensities in 270° C-plane

0°	2°	4°	6°	8°	10°	12°	14°	16°	18°	20°	22°	24°	26°	28°	30°	32°	34°	36°	38°
5356	5157	4743	4150	3449	2709	2035	1483	1071	779	576	432	327	251	196	153	122	106	86	70
100%	96%	89%	77%	64%	51%	38%	28%	20%	15%	11%	8%	6%	5%	4%	3%	2%	2%	2%	1%

Beam Angle 50%	Field Angle 10%	Cutoff Angle 2,5%	Intensity Ratio in 120° Cone	Intensity Ratio in 90° Cone
20.1°	41°	62°	99.0%	96.2%